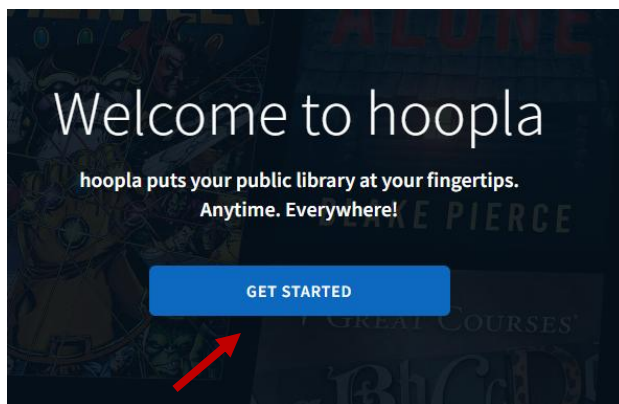
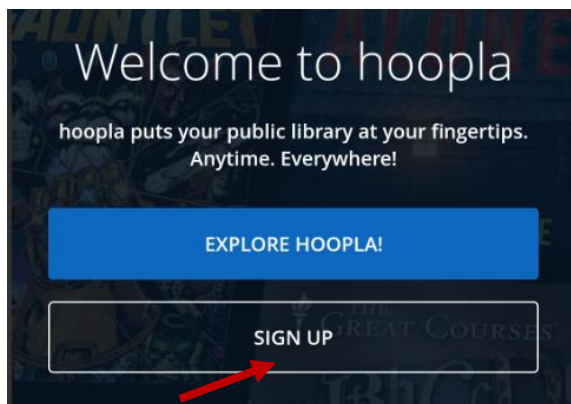




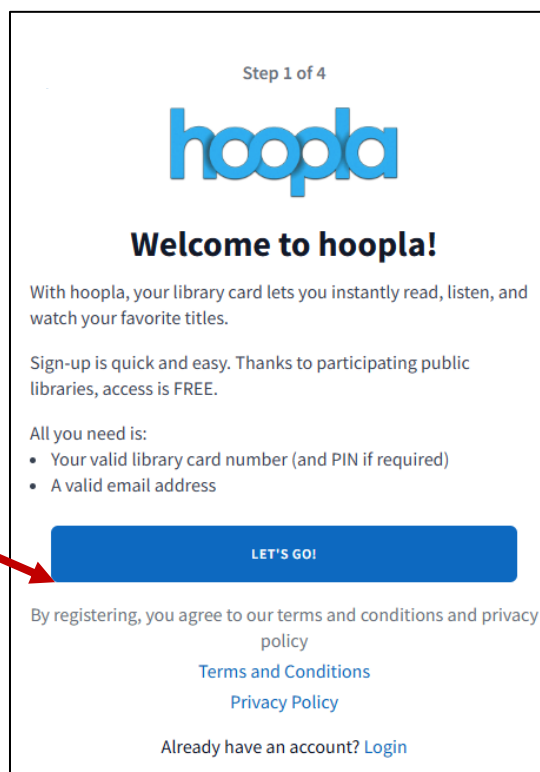
# Getting Started with Hoopla @ GPL

Access a world of free entertainment with your Glencoe Library card. To begin using Hoopla, download the Hoopla app from your device's app store or visit [www.hoopladigital.com](http://www.hoopladigital.com) in your browser. Follow the instructions below to establish your personal Hoopla account.

- 1) Download the Hoopla app or visit [www.hoopladigital.com](http://www.hoopladigital.com) in any Internet browser.
- 2) On the first screen, you will see a “Welcome to Hoopla” message and a “Sign Up” or “Get Started” button. Click the “Sign Up” or “Get Started” button to begin creating your account. If you have previously created an account, please click the “Log In” button in the upper right corner of the screen and skip to step 7.



- 3) The first registration screen explains what you need to set up a Hoopla account: a Glencoe Public Library card and an email address. Click “Let’s Go” to continue.



- 4) On the second screen, type “Glencoe” or your zip code in the “Search for your library” field. Select “Glencoe Public Library (IL)” from the list by clicking or tapping it, then click “Next.”

Step 2 of 4

### Find Your Library

Search by library name, city, state or zip

- Glencoe Public Library (IL)**  
Glencoe, IL
- Winnetka-Northfield Public Library Distict (IL)  
Winnetka, IL
- Northbrook Public Library (IL)  
Northbrook, IL
- Highland Park Public Library (IL)  
Highland Park, IL
- Glenview Public Library (IL)  
Glenview, IL

Don't see your library? This may be because they do not offer  
hoopla yet.  
[Request hoopla here!](#)

NEXT

- 5) The next screen asks you to connect with GPL using your library card. Enter your entire number with no spaces between digits, then click “Next.”

Step 3 of 4

### Connect With Your Library

Library Card

NEXT

6) The last screen asks for your email address and requires you to create a password. The password can be any combination of letters / numbers / symbols, but must be at least 8 characters long. **Please write down your password and keep it somewhere safe.** Once you have filled out your email and created a new password, click “Complete Registration.”

Step 4 of 4

## Almost Done!

We promise not to flood your inbox—we will only use your email address for essential communications.

Email

Email

Password

Password

Must be 8 to 40 characters long

COMPLETE REGISTRATION

7) Now you can log in to begin using Hoopla! Each time you access Hoopla, enter your email address and Hoopla password in the menu. Then, click the “Log In” button. *If you have forgotten your password, click “Forgot password?” to get a reset link via your email.*

## Welcome to hoopla

Email

rmurray@glencoelibrary.org

Password

Remember me on this device

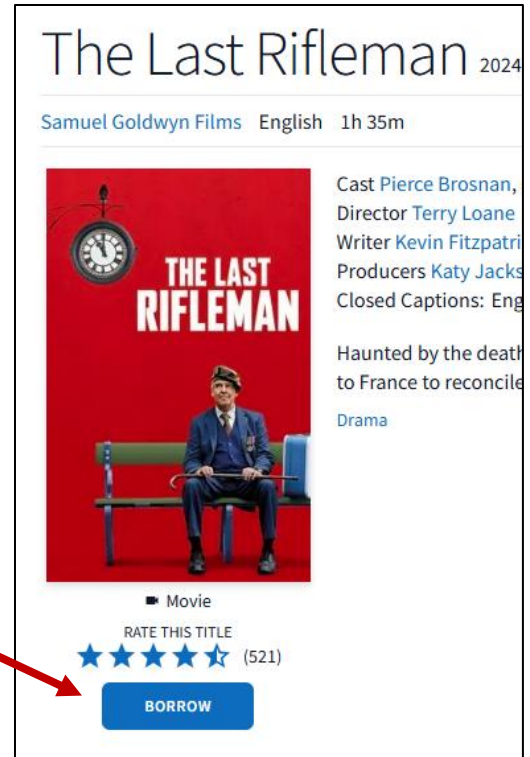
[Forgot email?](#)

[Forgot password?](#)

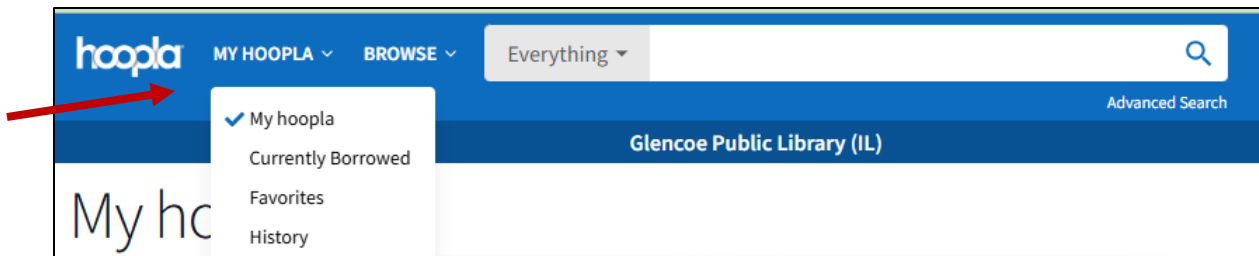
LOG IN!

Don't have an account? [Sign Up](#)

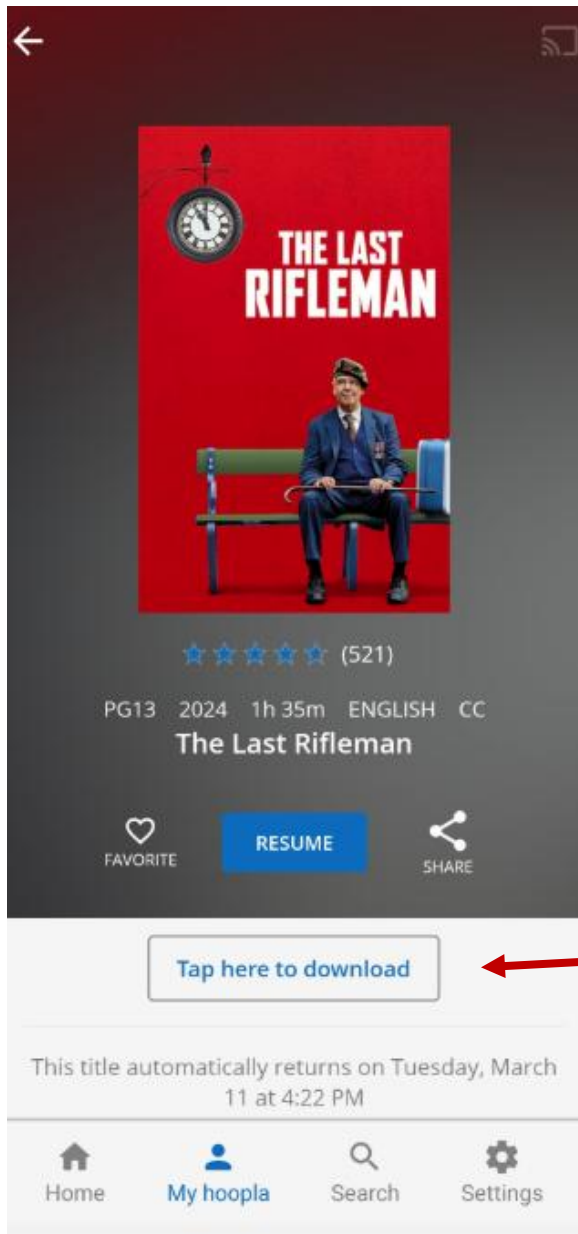
8) Once signed in, browse the My Hoopla page to locate movies, music, books, and audiobooks. Click the search field to look for a specific title. When you locate an item, click the cover image to see a detailed description. To check out the title, click the “Borrow” button. Hoopla will verify that you would like to borrow the title and will tell you how long the checkout will remain in your account. Hoopla titles return automatically at the end of the checkout period. To complete the checkout process, click “Borrow Title.” **All Glencoe library cardholders get 15 Hoopla checkouts per month.**



9) To view or listen to checked out items in Hoopla, go to “My Hoopla” in the menu bar. In the Hoopla app, the menu appears at the bottom of the screen; on the website, the menu bar appears at the top of the screen. A list of your borrowed titles will appear on the screen.



10) To play or read your titles, click the cover art. The title will open in the Hoopla app. **Always access and view your Hoopla titles in the Hoopla app.** To download the title for offline viewing on your mobile device, click the *title* of the item and then click “Download.” Cast Hoopla movies and TV shows to your TV via Apple Air Play or Chromecast by clicking the cast icon in the corner of the screen (check your device’s requirements for casting).



Cast icon

Tap here to download to your device for offline viewing.

If you have additional questions about using Hoopla or any other library resource, please stop by the Reference Desk or call the library at 847-835-5056. We are always happy to assist you.